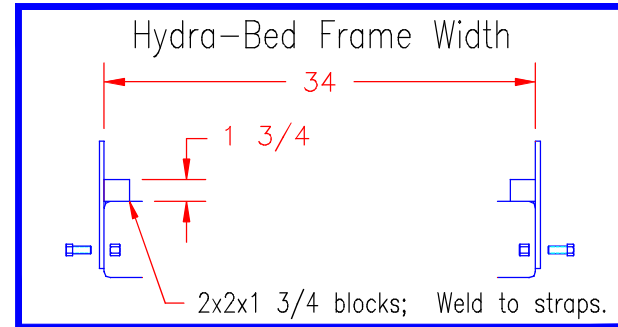


GENERAL INSTRUCTIONS AND CAUTIONS

Note: When welding, attach welder ground only to Hydra-Bed, not to truck frame. Use low-hydrogen rod or wire electrode. NEVER weld to the frame of the truck. Correct installation of the Level-Lok system assures Front to Rear and Side to Side leveling as well as Left to Right centering of the Hydra-Bed. Never obstruct factory overload spring mounting locations.

When drilling truck frame, do not damage any part of the braking, fuel or electrical systems.

VIEW OF REAR LEVEL-LOKS ON TRUCK FRAME



FRONT DLL-5

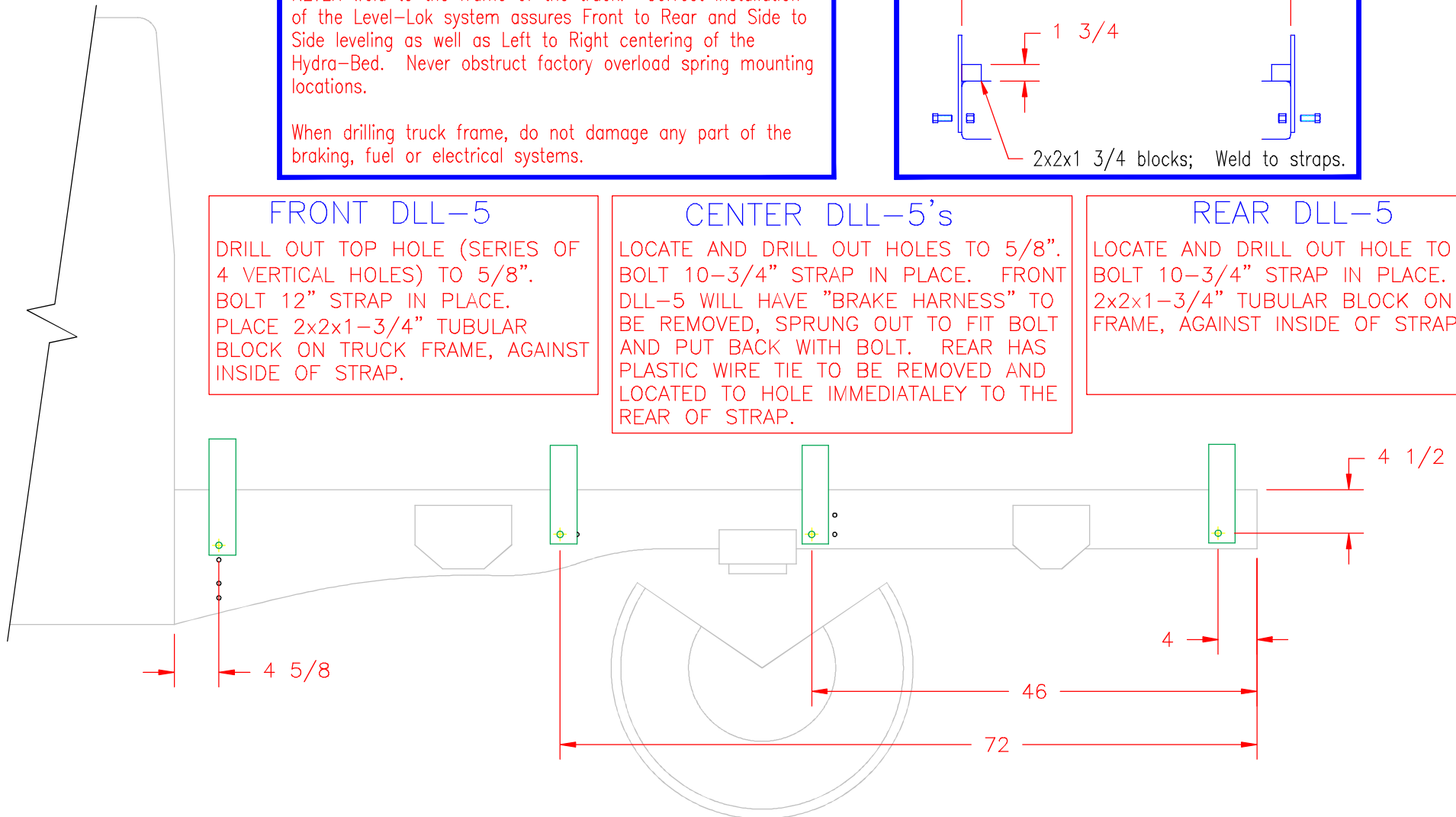
DRILL OUT TOP HOLE (SERIES OF 4 VERTICAL HOLES) TO 5/8". BOLT 12" STRAP IN PLACE. PLACE 2x2x1-3/4" TUBULAR BLOCK ON TRUCK FRAME, AGAINST INSIDE OF STRAP.

CENTER DLL-5's

LOCATE AND DRILL OUT HOLES TO 5/8". BOLT 10-3/4" STRAP IN PLACE. FRONT DLL-5 WILL HAVE "BRAKE HARNESS" TO BE REMOVED, SPRUNG OUT TO FIT BOLT AND PUT BACK WITH BOLT. REAR HAS PLASTIC WIRE TIE TO BE REMOVED AND LOCATED TO HOLE IMMEDIATELY TO THE REAR OF STRAP.

REAR DLL-5

LOCATE AND DRILL OUT HOLE TO 5/8". BOLT 10-3/4" STRAP IN PLACE. PLACE 2x2x1-3/4" TUBULAR BLOCK ON TRUCK FRAME, AGAINST INSIDE OF STRAP.



DLL-5

2007 DODGE
60" & 84" Cab to Axle Single/Dual Wheel